



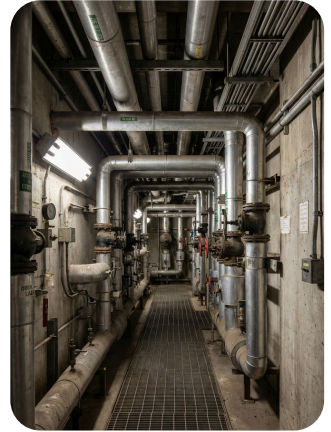
FJD Trion Quick Extensive Pole

Scan Beyond Limits



Extend Your Reach

Scan higher and reach farther to capture it all. Effortlessly extend your scanning range upward or into confined spaces across rooftops, bridge decks, factory ceilings and dense pipeline corridors. No hard to access area is ever out of reach.



Quick Assembly Design

The extension pole features a V-lock interface for instant assembly and removal, letting you adapt to different survey heights or depths in seconds without tools.



QUICK SPECS

Adjustable Length	135–300 cm
Foldable Length	135 cm
Foam Handle Length	60 cm
Material	Aluminum alloy
Weight	810 g
Rod Section Size & Wall Thickness	25.2 × 0.8 mm ; 28.7 × 0.8 mm ; 32.2 × 0.8 mm